



*matching your personality with your career*

# CAREER PROFILE

- First Name: Sam
- Last Name: Sample
- MyCareerMatch Test Report
- Date: 19 April 2016, 10:28



## Choose a career that's right for you

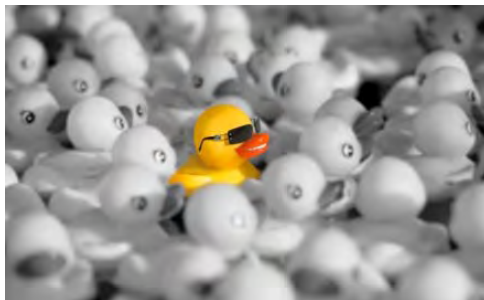
The secret to having a fun and exciting career lies in matching your personality style to careers you'd love the most.

Suitability for a career is determined by a number of factors, including your personality style. If you choose a career based on your strengths and personality you will enjoy your job and be happier at work. When your strengths match the job it's a 'good fit'. Employers call these your employability or transferable skills.

In our research, we've found that people are most successful when they are in jobs that allow them to use their natural strengths. Knowing your personality style is one of the best ways of finding out what you are good at, and the careers that best match.



## You are unique



Each of us has great potential, and each personality style has its own unique strengths and weaknesses. You have your individual talents; what you're good at; how you like to do things and what you enjoy most. These can be different from your family and friends and that's what makes you unique.

We all have different strengths and being clear on those strengths can help you to decide what you want to do at school, college or university. Knowing your strengths can help you choose a career and even how you spend your spare time. But that's not all. When you use your strengths, you start to build your self-esteem. This is because using your strengths gives you a feeling of positive energy and gives you the confidence that you are doing something well.

## Helping you take the next step

Your Career Match report lists a number of career choices that match the talents you have. Each career is linked to job information for you to research the job. We don't expect that you will be attracted to all of these. Select from the list the ones you find interesting and do your research to find out more about them.

Regardless of the career you choose, you will need to have the skills and qualifications to get a job. This means higher education and skills and/or apprenticeship training.



## Add to your CV

This icon indicates suggested content to include in your CV.

## Four personality styles

MyCareerMatch uses four style identifiers, **(D) DRIVER**, **(P) PROMOTER**, **(S) SUPPORTER** and **(A) ANALYSER**. When blended together in varying percentages, these four personality styles make us who we are.

### Driver



**Drivers are Adventurers** - strong willed, practical and decisive. They are action oriented and results driven. Drivers like to lead and win every challenge.

### Promoter



**Promoters are Socialisers** – outgoing, fun and charming. They are great communicators who inspire others with their imagination.

### Supporter



**Supporters are Helpers** – kind, dependable, and practical. They are easy to get along with and enjoy helping people.

### Analyser



**Analysers are Thinkers** – great with facts and numbers. They are well-organised, strive for accuracy and like to pay attention to details.

For information about personality styles click [here](#).

## Congratulations you are a

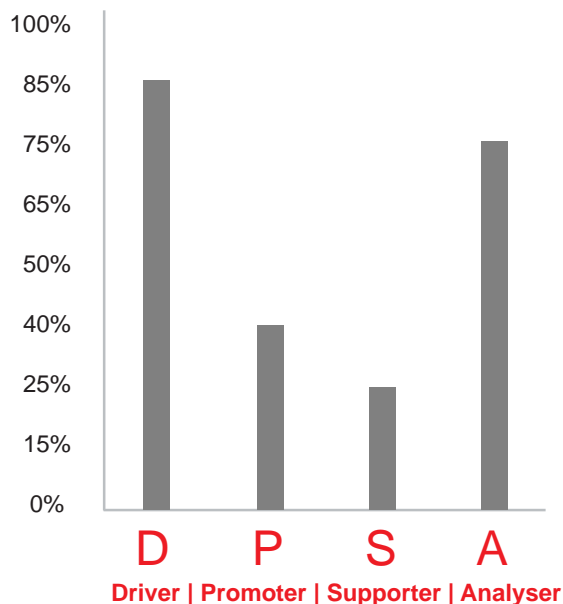
Dominant Style	Backup Style
<b>Driver</b>	<b>Analyser</b>

There is no right or wrong style, and one style is not better than another. The way you like to do things may not be the same as others. This doesn't make them better or worse, just different.

Life and careers are all about relationships. How you get along with your friends, partners and the people you work with will determine how well you do.

All styles can succeed or fail. What's important is what you do with your talents and the skills and education you receive.

### Your personality graph



People are a blend of all four styles and each style has its own level of strength. This graph indicates how strongly each style influences your personality. The highest is your **Dominant** style. This is the one that governs how you behave most of the time.

The second highest is your **Backup** style. It's like your co-pilot and kicks in when there's a need for balance and sound decision making. When styles are of equal percentage the order to determine your style is D, P, S then A.

## Your Driver Analyser style

Driver Analysers are determined people who have great confidence, are not easily side tracked and can't be pushed into doing something they don't want to do. This can make you very stubborn but also very determined. You say exactly what you think and sometimes this will upset others but you don't mind because you are a direct straight forward person who once having set your mind on something just goes after it.

You feel that you can manage things on your own if you have to and you are confident when making decisions. You are prepared to take calculated risks and give it a go. You have the confidence to take charge and you are not afraid to tackle new situations. You are a great problem solver and have the ability to carefully consider and weigh up your options. You love a challenge and being the winner is always your goal. You don't get too emotional and prefer to deal with facts and figures than with people. You're not unsocial but you don't have to have people around you all the time.

You are a creative thinker and something of an inventor. Your talent to think things through helps to drive your adventurer spirit. It also allows you to come up with new ideas that you try out. You persist with something until you become expert at it.

## Words that describe you

Inventive, creative, demanding, assertive, forward thinking, forceful, reserved, thoughtful, logical, active, alert, tangible results, direct, self-starter, systematic, precise, accurate and perfectionist.



## Your work-related strengths

- Ability to work well with defined tasks and tangible products
- Keen powers of observation and an excellent memory for factual information
- Ability to bring order to confusing data and to recognise facts
- Aptitude for working alone or alongside others you respect
- Ability to stay calm and cool in a crisis when under pressure
- Ability to recognise what needs doing and what is necessary to complete the job
- Aptitude for working with your hands and with tools
- Ability to adapt well to sudden change and shift gears quickly
- Practicality and commonsense
- Ability to identify and make good use of available resources



## The qualities you bring to a job

- You accept challenges
- You value time
- You adhere to procedures and policies
- You get results
- You make decisions
- You solve problems
- You focus on detail
- You bring reality to the situation
- You enjoy working to guidelines

## Your ideal job environment

### Driver Analysers are best where:

- There is freedom from control and supervision
- There are challenges and rewards
- Tasks can be broken down into measurable components
- Relationships skills are not required
- There is an opportunity to delegate and manage
- They can make decisions
- Technical, task-oriented work is required
- There is an environment where quality and standards are important

## Things you like

- New ideas
- A new challenge
- To make things happen
- To show you can do it for yourself
- Be respected for what you can do
- Be in charge
- Practical ideas and suggestions
- To finish what you start
- Doing things you know you're good at
- To do things step by step
- Things that make sense

## What you are good at



- Overcoming obstacles
- Pushing the group ahead
- Accepting challenges
- Maintaining the focus on goals
- Getting results
- Providing leadership
- Working carefully
- Solving problems
- Organising material
- Thinking logically

## What we admire about you



- You are a determined person
- You have confidence in yourself
- You are able to handle things on your own
- You are decisive
- You know what you want and go after it
- You like to get results when you do things
- You have a lot of drive
- You are upfront with people
- You have high standards
- You always try to do your best work
- You like things to be organised
- You do things in a logical way
- You like to think about things and then decide
- You are a trustworthy person

## How you make a difference



You make a difference by “being yourself”. Being yourself means using your strengths and the things you’re good at. But being yourself is not enough. You also need to have skills and qualifications so that you can use your personal strengths to be the best you can.

People with a DRIVER ANALYSER style similar to yours make a difference by:

### Taking Charge

Your leadership skills compel you to take charge and be in control. You make a difference when it’s needed to turn a business around or solve a problem because you are willing to back yourself. Your self-confidence and leadership qualities encourage others to follow and support you.

### Setting High Standards

Your natural instincts to win mean that you set high standards for yourself and others. You make a difference by encouraging others to be the best they can be and not to expect anything less than success. You respect loyalty and hard work.

### Accepting Challenges

You enjoy a challenge that uses your ability to think outside the box, be innovative and take action. You make a difference by encouraging others to get on with it, take calculated risks and challenge themselves.

### Being A Creative Thinker

You make a difference by being a visionary, a “future oriented” person who doesn’t look back. You are good at developing plans, schemes and concepts, sometimes the bigger the better. Nothing is impossible. You use a logical approach to design and innovation.

### Meeting Deadlines

You are realistic and strive for results such as getting things done on time, or saving money or figuring out how to be more productive. You want to see tasks completed efficiently. You make a difference by ensuring that things are done correctly and deadlines are met.

### Solving Problems

You are a natural and gifted problem solver. You make a difference by being able to get to the core of a problem and provide solutions that work. You see the problem as a challenge rather than a setback, and this gives you the clarity to see through it.

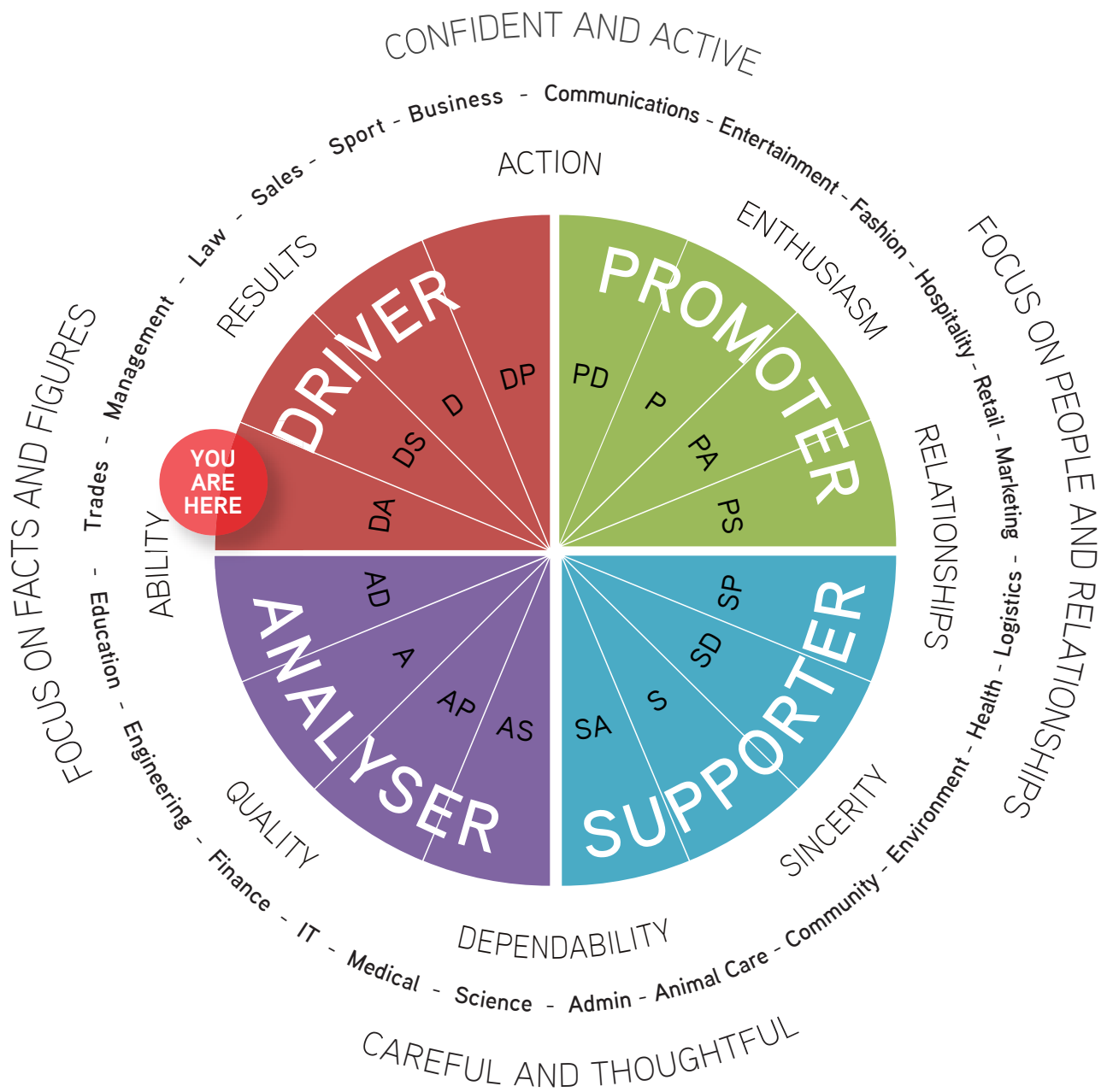
### Big Picture Person

You prefer to work with the big picture, the big idea, rather than get into details. You make a difference by your sensible approach to see how things connect. You see how everything relates and where problems may arise. This is why Drivers tend to be the entrepreneurs of society.

### Respecting Rules

You respect authority and are willing to use your authority with a sense of fairness. You understand that rules are meant to be followed because they create order and a method by which things get done. You make a difference by sticking to procedures and systems.

Your career personality map




**How to interpret your Career Personality Map**

The Map is divided into the four MyCareerMatch styles, DRIVER | PROMOTER | SUPPORTER | ANALYSER | and combinations of each style (DA, DP, DS etc.). Your style is shown as 'YOU ARE HERE'. The outer circle represents 'what you focus on' and 'how you approach life'. A Driver focuses on facts and figures and is confident and active; a Supporter focuses on people and relationships and is careful and thoughtful. The middle circle shows examples of careers that match your strengths. The inner circle represents 'what's important to you' - for Drivers it's results and for Promoters it's enthusiasm.

## Your top 5 career recommendations

Here's why we suggest these are for you ...

You are good at creating order and using logic to build things step-by-step, your task-oriented approach makes you an ideal for these careers. Your high standards and organisation skills are perfect matches for a career in this sector, where you could easily take on a leadership role. Your strong leadership skills make you well suited to the world of business. You have a confidence and determination that make you a perfect match for a successful career.

- Click the **industry icon** to view career information
- Click **job name** to view details on CareersNZ website
- Click  to view career videos



### Education

Education is helping children, young people or adults learn. It involves teaching, counselling, career advice, planning and working with people from different backgrounds, ages and cultures.



Early Childhood Teacher  
Kaiwhakaako Maori  
Nanny/Child Carer  
Primary School Teacher  
Secondary Teacher  
Special Education Teacher  
Teacher Aid



### Engineering

Engineering is about solving technical problems and designing solutions either in chemicals, materials and manufacturing processes or mechanics, electrics, electronics, telecommunications or construction.



Aeronautical Engineer  
Agricultural Engineer  
Biomedical Engineer  
Chemical Engineer  
Civil Engineer  
Electrical Engineer  
Electronics Engineer  
Environmental Engineer  
Marine Engineer  
Mechanical Engineer  
Mining Engineer  
Network Engineer



### Business

Business is about managing people, property and products. It's also about planning and budgeting and requires financial and training skills as well as communication, marketing and sales expertise.



Agri/Horticultural Consultant  
Business Analyst  
Health and Safety Adviser  
Health Services Manager  
Human Resources Adviser  
Management Consultant  
Managing Director  
Procurement Manager  
Project Manager  
Purchasing/Supply Officer



### Finance

Finance includes accounting and insurance. Helping people with their financial, accounting and insurance needs including business planning, budgeting and banking services.



Accountant  
Auditor  
Bank Worker  
Cashier  
Debt Collector  
Finance Manager  
Financial Adviser  
Insurance Agent  
Mortgage Broker



### Construction

Construction industry includes a variety of professional and trade expertise and involves working with tools, machinery and equipment to do building, repair or maintenance, developing plans, designs and specifications.



Architect  
Air-Con Technician  
Carpenter  
Civil Engineer  
Concrete Worker  
Electrician  
Fencer  
Floor and Wall Tiler  
Glazier  
Joiner  
Machine Operator  
Painter and Decorator  
Plasterer  
Plumber  
Quantity Surveyor  
Surveyor

The jobs above indicate the current best prospects in each industry. When considering a career investigate the employment opportunities. These vary depending on economic circumstances and demand so check [NZ Government](#) website to view job projections and growth forecasts.

We thank [CareersNZ](#), [Just The Job](#) & [StudentEdge](#) for permission to link to their website.





## Suggested career options for New Zealand students

Use this page to explore and discover information about the careers and occupations that match your **Driver Analyster** strengths. Each career listed links to the **CareersNZ** website.

In listing occupations that are popular among Driver Analysters, it's important to note that there are successful people of all styles in all occupations; however the following are careers Driver Analysters may find satisfying.

**To find out about a career, click the link and start exploring.**

<a href="#">Accountant</a>	<a href="#">Engineering Manager</a>	<a href="#">Online Business Entrepreneur</a>
<a href="#">Accounts Clerk</a>	<a href="#">Farmer/Farm Manager</a>	<a href="#">Outdoor Adventure Leader</a>
<a href="#">Advertising Account Executive</a>	<a href="#">Film, Stage and Television</a>	<a href="#">Painter and Decorator</a>
<a href="#">Aerospace Engineer</a>	<a href="#">Financial Institution Branch Manager</a>	<a href="#">Paramedic</a>
<a href="#">Air Force Officer</a>	<a href="#">Firefighter</a>	<a href="#">Park Ranger</a>
<a href="#">Air Traffic Controller</a>	<a href="#">Foreign Affairs and Trade Officer</a>	<a href="#">Pilot</a>
<a href="#">Aircraft Maintenance Engineer</a>	<a href="#">Forester</a>	<a href="#">Police Officer</a>
<a href="#">Army Officer</a>	<a href="#">Games Developer</a>	<a href="#">Production Manager</a>
<a href="#">Audiovisual Technician</a>	<a href="#">Geological Engineer</a>	<a href="#">Property Developer</a>
<a href="#">Automotive Electrician</a>	<a href="#">Hospital Administrator</a>	<a href="#">Property Manager</a>
<a href="#">Biomedical Engineer</a>	<a href="#">Hotel or Motel Manager</a>	<a href="#">Recruitment Consultant</a>
<a href="#">Building Contractor</a>	<a href="#">Human Resource Manager</a>	<a href="#">Retail Manager</a>
<a href="#">Building Site Manager</a>	<a href="#">Industrial Engineer</a>	<a href="#">Sales Representative</a>
<a href="#">Career Development Practitioner</a>	<a href="#">Information Technology Manager</a>	<a href="#">School Principal</a>
<a href="#">Carpenter</a>	<a href="#">Landcare Worker</a>	<a href="#">Security Officer</a>
<a href="#">Chef</a>	<a href="#">Lawyer</a>	<a href="#">Sports Administrator</a>
<a href="#">Chemist</a>	<a href="#">Librarian</a>	<a href="#">Sports Coach</a>
<a href="#">Chiropractor</a>	<a href="#">Livestock Farmer</a>	<a href="#">Sportsperson</a>
<a href="#">Civil Engineer</a>	<a href="#">Mechanical Engineer</a>	<a href="#">Storeperson</a>
<a href="#">Construction Manager</a>	<a href="#">Medical Practitioner</a>	<a href="#">Surveyor</a>
<a href="#">Construction Worker</a>	<a href="#">Natural Resource Manager</a>	<a href="#">Systems Designer</a>
<a href="#">Customs and Border Protection Officer</a>	<a href="#">Navy Officer</a>	<a href="#">Teacher - Secondary</a>
<a href="#">Dental Hygienist</a>	<a href="#">Nurse</a>	<a href="#">Technical Sales Representative</a>
<a href="#">Dentist</a>	<a href="#">Nursing Manager</a>	<a href="#">Web Designer/Developer</a>
<a href="#">Education Manager</a>	<a href="#">Occupational Therapist</a>	
<a href="#">Electronics Technologist</a>	<a href="#">Office Administrator</a>	

We thank [CareersNZ](#) for permission to link to the website. CareersNZ is a New Zealand Government website that is free for everyone to use. We encourage you to visit the site and explore the many career, education and job resources available.

## Careers in Science, Technology, Engineering and Mathematics



There is a huge variety of exciting career paths open to people with STEM based skills. Young people with STEM qualifications are in demand in the job market and have good long term career prospects. People with STEM skills can make a big contribution to many of the challenges facing society today.

75% of fastest growing jobs in New Zealand require people with STEM qualifications. NZ has identified a shortage of people with STEM skills, so the opportunity for you is exciting.

If you ask yourself **"what problem would I like to solve"** rather than **"what do I want to be"**, you'll discover that science, technology, engineering or mathematics is likely to be required.

It is often a surprise to people just how many different careers are based on STEM skills. There are jobs to suit all personalities and all skill levels. Here are just a few examples:



**Entertainment:** from the design of video games, to special effects for films, to sound engineering for the music industry.



**Health:** from hospitals and healthcare professionals caring for patients, to inventing new high tech life-saving equipment such as scanners, to pharmaceutical companies researching new medicines.



**Aerospace and transport:** from making travel easier for people whether on the roads, rail or in the air, through to helping goods be transported around the world for trade and humanitarian relief.



**Energy and environment:** from inventing new technologies to reduce carbon emissions, to developing new energy sources such as wind, waves and sun, to protecting rare species of animals.



**Telecoms and information technology:** from the technology used in our mobile phones, to software designs which give us access to the internet, to managing international communications networks.



**Construction and the built environment:** from architecture and design, to civil engineering of everything from bridges, railways and roads, to homes and parks, from constructing buildings to planning towns.



**Food and agriculture:** from developing new high yielding plant varieties to feeding more people around the world, to cooking up new recipes for supermarkets, to farming the land.



**Sport and fashion:** from inventing new high performance sports equipment, to physiotherapy for athletes, from new textiles to computer aided design of new fashion ranges.

## Your strength can also be your weakness

You've figured out that some people are like you and others are not. People are different. This doesn't make them better or worse than you, just different. Some people like action movies and others like comedy. Personal preferences determine your choice of music, clothes, hairstyle and friends.



How well you get along with others is a major factor in how successful you will be in your job and in the relationship you have with friends, partners, parents and teachers.

We each have personality behaviours that make us good at what we do but there are also behaviours that can make us look bad, annoy other people or get us into trouble.

As a Driver personality you enjoy activity, challenges, competition and you like to be in charge. You are strong willed, determined, practical and decisive. These are great strengths to have. But your strengths can become your weakness if you over use them. For example; you are courageous but this can lead to being reckless, you are results oriented and this can lead to you being pushy and because you are a confident person people sometimes see this as being too cocky, and since you are direct and tell it as it is, you can be seen to be rude.

Generally the Driver weaknesses are getting angry to quickly, wanting to be the boss all the time, not caring about others and being impatient.

People will always admire and want the things that make you a Driver but be aware that there's an opposite side to your personality style that can annoy others.

## Self-improvement tips for Driver dominant styles like yours

1. You can't always do it your way
2. What you say is as important as what you do
3. Slow down, relax and don't rush
4. Be patient with people you don't agree with. Others have great ideas so listen to what they have to say
5. Respect everyone, be polite and don't trash
6. Be prepared to change your mind when a better idea or suggestion is made
7. Be big enough to apologise and say sorry
8. Compliment others, say nice things and mean it!
9. Give control to others and trust them
10. Don't be too busy to spend time with friends and family

## GRIT makes you successful

Regardless of your personality type, research shows that GRIT is a major factor in success and achievement. Hanging in there, finishing what you start, not giving up and setting goals make all the difference to who you will become. Grit is about not letting go no matter what. The amount of effort you are prepared to put determines if you finish high school, graduate or do well in your career. People who are hardworking and determined, do better than those who give up too soon.

So good luck and hang in there!

## Report privacy

Your MyCareerMatch report is based on your answers to the survey and is intended as general information about you and to help you choose a career.

MyCareerMatch makes no guarantees about the accuracy of this report. We not view or keep copies of your report. For further personal career counselling we recommend you speak with your teacher or a careers guidance professional.

MyCareerMatch is the registered Trademark of MyProfile Pty Ltd a industry leader in online assessments for careers, resumes and jobs.